

3Play™ 425

For years, the cost of professional, multi-camera replay has prevented smaller broadcasters, schools and conferences from producing network-quality sports programming. Now you can give any competition a big game feel.

NewTek 3Play 425 is a multi-camera, live sports solution that hits the 4-in, 2-out “sweet spot” for sports producers, with a lightweight price point that levels the playing field. From mobile unit to the press box, this turnkey 2U rack mount system comes through in the clutch. Mix and match video formats, view top plays from every angle, and deliver game after game with a season’s worth of HD storage. And with rapid-fire instant replay, show-stopping slow motion, and crowd-pleasing highlight reels, your fans become more than spectators – they’re right in the middle of the action.

From critical calls to game-winning plays, 3Play 425 makes it possible for producers at every level to deliver the live sports experience that fans have come to expect.

At a Glance

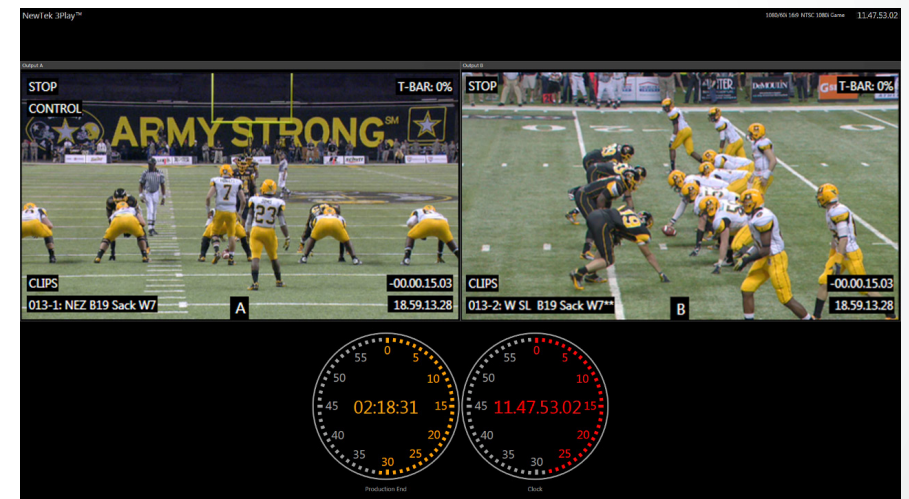
- **6-Channel Sweet Spot**
4-input, 2-output live sports production for professional, multi-camera replay coverage and delivery for broadcast or big screen
- **Interpolated Slow Motion**
Clear, crisp slow motion playback to break down highlights or analyze key plays – frame by frame – with incredible detail
- **In-Game Highlights**
Package the best plays and game-changing moments into playlists for instant replay – adding transitions and background audio for dramatic effect
- **Powerful and Compact**
2U rack mount design to fit any control room or production vehicle, with hardware control surface included
- **Network with TriCaster**
Over-the-network integration with TriCaster for maximum workflow efficiency and flexibility



Monitors not included.

3Play™ 425 Tech Specs

Video Input	4 simultaneous inputs Any combination of: HD-SDI, HD Component, SD-SDI, SD Component, Composite, or Y/C (BNC)
Video Outputs	2 fully independent, simultaneous playout channels - HD-SDI, HD Component, SD-SDI, SD Component, Composite, or Y/C (BNC) - HDMI output - Dedicated HDMI multi-view output - Network output for over-the-network input to TriCaster
Output Modes	A;B; A+B
Recording Channels	4
Genlock	Locks to HD or SD analog signals Supports either tri-level or bi-level sync sources
Multi-Viewer	Supported with 2nd display, including HUD
Audio Inputs	4 SDI Embedded 3 x 2 Balanced 1/4" (Mic/Line) 1 x 2 Balanced XLR (Mic/Line)
Audio Outputs	2 SDI Embedded 1 x 2 Balanced XLR 1 x 2 Balanced 1/4"
Audio Processing	Audio is uncompressed and sampled at 96kHz, 32-bit
Time Code	LTC
AV Standard	HD-SDI video conforms to SMPTE 292M SD video conforms to SMPTE 259M and ITU-R BT.656 Analog audio levels conform to SMPTE RP-155
Controller	Dedicated controller with T-bar, jog wheel, speed presets, and clip transport
Dimensions	19 x 3.5 x 22.5 in (48.3 x 8.9 x 57.2 cm)
Weight	28 lbs (12.7 kg)



Subject to change without notice.
For complete technical specifications, please visit the 3Play 425 product page at www.newtek.com.

©2013 NewTek, Inc. All rights reserved. TriCaster and 3Play are trademarks of NewTek, Inc.

Learn More Online.

