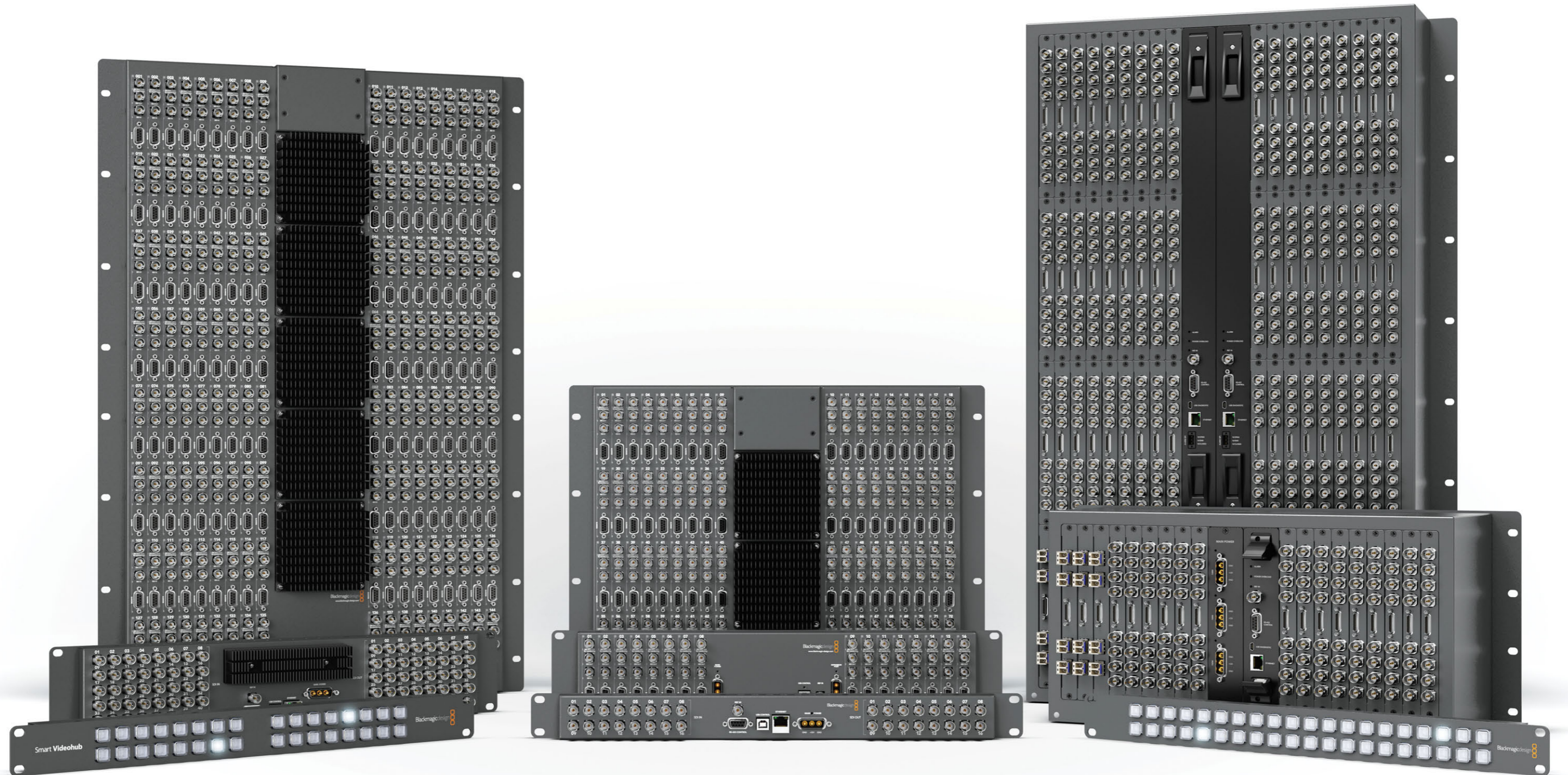


Videohub

Powerful broadcast quality 3 Gb/s SDI routers up to a massive 288 x 288 size!



Only Videohub routers give you advanced technology 3 Gb/s SDI routing at less than an inch thick!

Eliminate complicated manual video patching forever! Videohub routing switchers let you connect all the equipment in your facility and easily change connections from a range of easy to use control panels! The Videohub family are true broadcast grade routing switchers up to a massive 288 x 288 SDI with 288 deck control ports. Videohub routers feature auto switching SD, HD, 3 Gb/s SDI and SDI re-clocking. You can choose an all in one model, or a card based model that lets you custom build your own router!

Videohub routers completely eliminate the need for manual cable patching because all the equipment in your facility can simply be connected to Videohub and then the connections are changed electronically. Manual cable patching is complicated and often difficult for creative users to understand, plus patch cables can quickly wear out so you get glitches in the video. Videohub routers eliminate these problems because all SDI signals are re-clocked, so you always get crystal clear error free SDI video!

Smart Videohub \$2,495



Widest Range of Router Sizes

From 16 x 16 SDI all the way up to a massive 288 x 288 SDI and serial control, there is a model for all your needs! You get the highest quality SMPTE compliant low jitter SDI connections, full SDI re-clocking and auto switching SD, HD and 3 Gb/s SDI connections. Videohub routers feature single board models for affordable and compact routing, as well as card based models that feature full redundant cross-points for the ultimate in flexibility and broadcast grade reliability.

Smart Control \$495



Videohub Smart Control

Add push button routing to your decks and monitors! Smart Control installs under each video device, and each button can be customized to a router input. When you push a button, the router output connected to your deck or monitor changes! You can also have multiple outputs! Buttons illuminate white when set as inputs, gold for outputs, and the lower right button is red if you enable the take button feature!

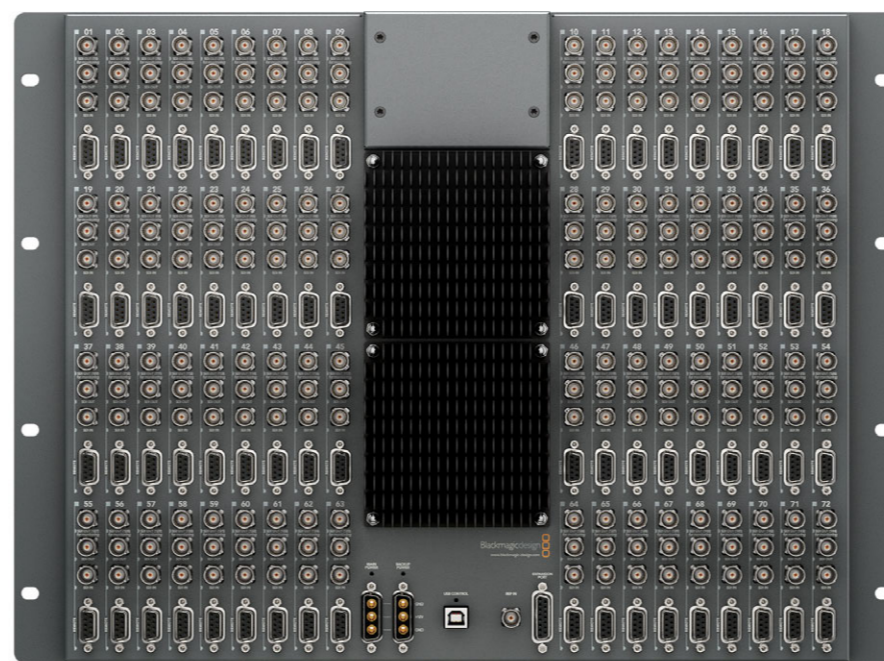
Micro Videohub \$1,995



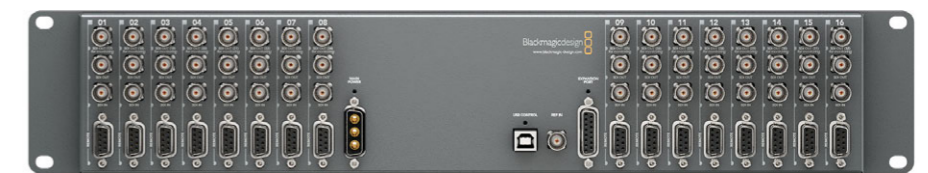
Compact Videohub \$4,995



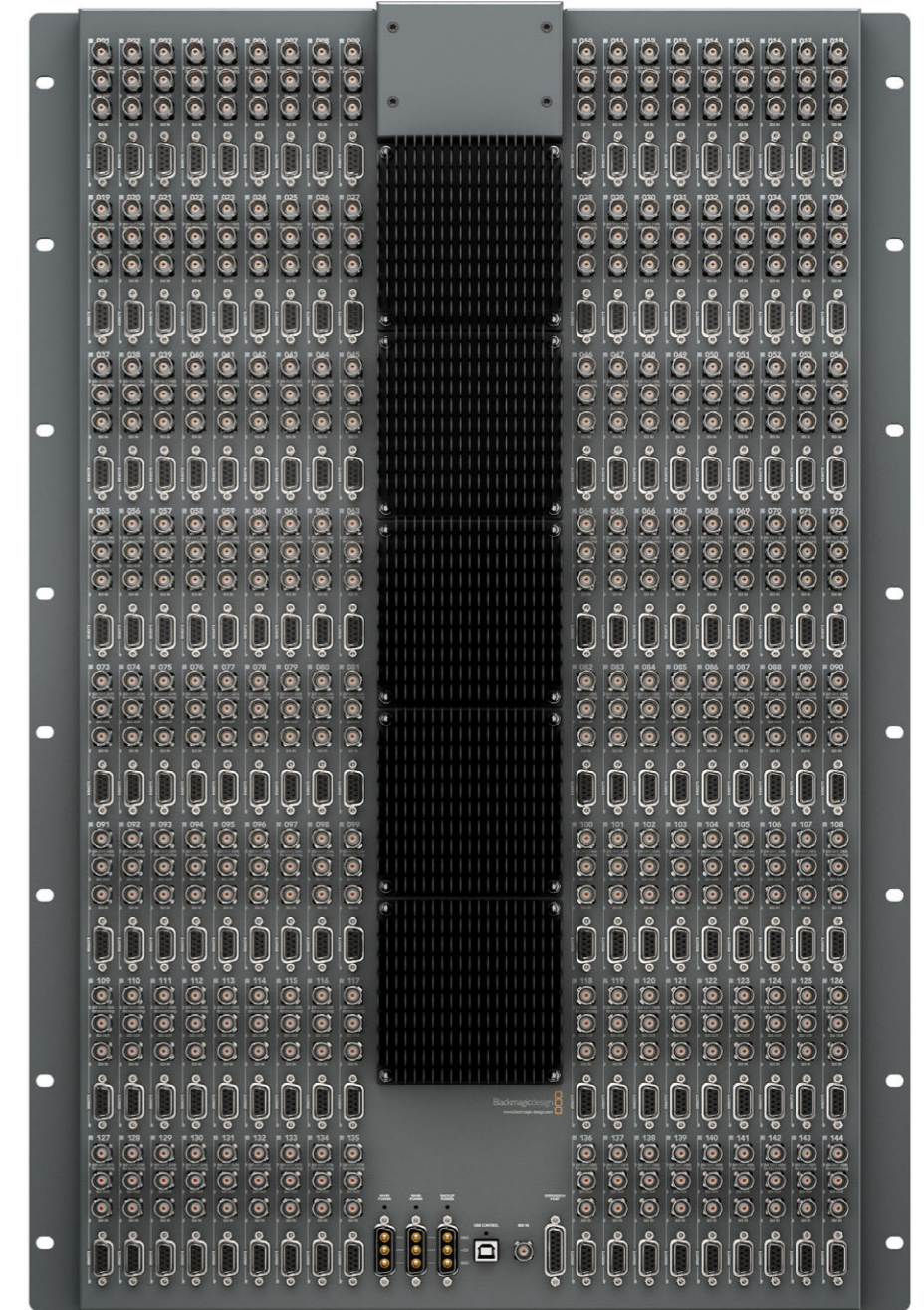
Broadcast Videohub \$14,995



Studio Videohub \$2,995



Enterprise Videohub \$29,995



Build your own router in SDI or optical fiber with single or redundant cross-points for the ultimate in 24/7 reliability!

Universal Videohub 72

Universal Videohub 72 is a fully scalable 3G/HD/SD and deck control routing switcher. Add either regular copper SDI or optical fiber SDI interface cards as you need, up to a 72 x 72 SDI size router. The Universal Videohub 72 rack frame is only 5 RU and 6 inches deep and can support a single 72 x 72 crosspoint card and a single power supply card.

You get full auto standard detection, re-clocking, 3 Gb/s SDI support, 72 x 72 deck control, ethernet/serial control and more. Universal Videohub 72 is a fantastic medium sized router that lets you grow. When you're ready to upgrade, all SDI interface cards, crosspoint and power supply cards can be installed into the larger Universal Videohub 288 chassis!



1 Universal Videohub 72

Rack frame lets you add up to 18 BNC SDI or optical fiber SDI interfaces plus a single 72 x 72 crosspoint and power card. Includes removable fan tray and fans.

\$3,945

2 Universal Videohub 72 Crosspoint

Supports up to 72 x 72 SDI and control, ethernet and serial router control, genlock and alarm indicators. Compatible with Universal Videohub 72 and 288 frames.

\$4,245

3 Universal Videohub 72 SDI Interface

Includes 4 SDI inputs and 4 SDI outputs, plus 4 deck control. Includes full re-clocking and auto switching SD, HD and 3 Gb/s SDI.

\$385

4 Universal Videohub 72 Optical Fiber Interface

Includes 4 inputs and 4 outputs plus 4 deck control, re-clocking and SD, HD and 3 Gb/s. 1310 nm laser drivers and receivers up to 25 km at 3 Gb/s.

\$995

5 Universal Videohub 72 300 Watt Power Supply

Lets you add up to 3 external 12 volt power supply "bricks" (sold separately) as you need. 3 power supplies gives you enough power for 288 x 288 BNC SDI!

\$295

6 Universal Videohub 72 Remote Cable

If you need remote control then use this cable to add four independent remote control ports to either the BNC SDI or optical fiber SDI interfaces!

\$75

Universal Videohub 288

The Universal Videohub 288 is the ultimate 3G/HD/SD and deck control routing switcher. With a choice of 72 x 72 or 288 x 288 crosspoint cards, the frame can be easily upgraded using our hot swappable regular BNC SDI or optical fiber interface modules that also include full deck control. If you need redundancy then simply add a second crosspoint card for true 24/7 reliability!

All inputs have auto standards detection and all outputs are re-clocked. Universal Videohub 288 features an 18 rack unit frame that is less than 6 inches deep. You also get ethernet and serial connectivity, third party control and redundant power supplies. Universal Videohub 288 lets you start small for an affordable cost and then expand its size and even add full redundancy as your needs grow!

1 Universal Videohub 288

Rack frame lets you add up to 72 BNC SDI or optical fiber SDI interfaces plus a single 72 x 72 or dual 288 x 288 crosspoint cards and up to two power cards. Add a single crosspoint for affordability, or add dual crosspoint and power cards for full redundancy. Includes removable fan tray and fans.

\$8,345

2 Universal Videohub 288 Crosspoint

Supports up to 288 x 288 SDI and 288 x 288 deck control, ethernet/serial router crosspoint control, genlock, alarm GPI and alarm indicators. Compatible with Universal Videohub 288 frame.

\$19,995

3 Universal Videohub 288 SDI Interface

Includes 4 SDI inputs and 4 SDI outputs, plus 4 deck control. Includes full re-clocking and auto switching SD, HD and 3 Gb/s SDI.

\$385

4 Universal Videohub 288 Optical Fiber Interface

Includes 4 inputs and 4 outputs plus 4 deck control, re-clocking and SD, HD and 3 Gb/s. 1310 nm laser drivers and receivers up to 25 km at 3 Gb/s.

\$995

5 Universal Videohub 288 800 Watt Power Supply

Required when building a fully loaded router with mixed optical fiber and BNC SDI modules. Includes power cards, cables and 1 rack unit power supply with dual redundant 800 Watt 12 volt power supplies.

\$2,995



Videohub

Control Videohub from your computer's desktop, hardware control panels or even an iPad!



World's Greatest Router Control

Say goodbye to expensive and hard to use custom hardware control panels! Videohub uses software control panels that run on any computer so you can control the router right from your desktop. There's a wide range of control panel styles to suit your workflow. You can even use large touch screen all-in-one computers as a customized router controller with easy to press icon buttons in an elegantly designed layout. Videohub software is easily the world's most beautiful router control!

Network Router Control

Videohub uses software control panels that run on Windows™ and Mac OS X™. This lets you control the router from the same system you edit on. Videohub connects to any computer via USB and is then shared over your local network. Simply connect to the router via the USB 2.0 connection which activates any computer as the host, allowing other computers on your network to connect. You can even use our developer SDK for your own custom software control!

Develop Custom Control

Videohub includes a free software developer kit so you can develop software to talk to all models of Videohub routers. The Videohub SDK works on both Mac and Windows, and lets you change crosspoints, labels, routing, crosspoint locks and more. If you're looking for a more hardware based custom solution, then you can even use the built in serial connector on most models to control using industry standard protocols for a wide range of compatibility with third party router panels.



The world's greatest router software control!

Broadcast Videohub

Sources

Destinations

Your destinations are all neatly placed within the lower panel

Your connections are shown when illuminated in gold

Includes a suite of great icons to make navigation quicker

Each button can have its status changed or locked

A grey lock symbol indicates another user has locked this destination

Your sources are all neatly placed within an easy to navigate top panel

World's Highest Quality 3 Gb/s SDI

With new 3 Gb/s SDI connections built in, Videohub allows twice the SDI data rate than normal HD-SDI. Use 3 Gb/s SDI for high resolution real time 2048 x 1556 feature film editing. 3 Gb/s SDI has full compatibility with SD, HD or 2K so you can connect to all your current SD and HD equipment. Videohub lets you connect all this equipment at the same time, as it auto switches the moment any SDI input changes video format.

Connect to Everything

Videohub uses standard SDI connections that auto switch between all SD, HD and 3 Gb/s HD-SDI video formats, so you can connect to virtually any device used in television production. Connect all your editing systems, decks, monitors and anything else you can imagine. If you're working in high quality Dual Link 4:4:4 RGB video, then you can just use two SDI connections for Dual Link routing!

Choose from the world's most advanced technology routing switchers in the size you need!

Micro Videohub

Perfect for locations where space really counts, such as outside broadcast trucks. Micro Videohub is the world's smallest router! Micro Videohub includes 16 x 16 SDI routing, auto standard detection for SD, HD and 3 Gb/s HD-SDI, re-clocking, with built in ethernet, USB and serial router control interfaces.

\$1,995

Studio Videohub

Studio Videohub is perfect for smaller workgroups who need compact size at an affordable cost. Studio Videohub has the exact same high performance features of the larger models, including 3 Gb/s SDI, auto standard detection for SD, HD and 3 Gb/s HD-SDI formats, re-clocking and more. Features 16 inputs, 32 outputs and 16 deck control ports all packed into a tiny 2 rack unit size less than an inch thick.

\$2,995

Enterprise Videohub

Enterprise Videohub is a massive size that's perfect for the largest facility or broadcaster. Enterprise Videohub is one of the largest routers available and includes the same advanced technology as the other Videohub models at an affordable price. Enterprise Videohub features a massive 144 inputs, 288 outputs and 144 deck control ports all packed into a 16 rack unit size that's so thin you can install it in the back of a rack!

\$29,995

Smart Control

Now you can afford a control panel for all your monitors and decks so you can set the input with a single button press! Each button can be set to a different router input and you can set single or multiple router outputs. All buttons include full RGB illumination and Smart Control connects to Videohub via Ethernet and setup software is included!

\$495

Compact Videohub

Perfect when you need a bigger router in a small size, such as creative post facilities and broadcast trucks! Compact Videohub includes 40 x 40 SDI routing all packed into a 2 rack unit size! You get auto SD, HD and 3 Gb/s HD-SDI detection, re-clocking, with built in ethernet, USB and serial router control interfaces.

\$4,995

Broadcast Videohub

Broadcast Videohub is an ideal central router for larger post production facilities and regional broadcasters. Broadcast Videohub is the perfect combination of a large size at an affordable price, so you can use it for connecting all your equipment to a central location. Features a massive 72 inputs, 144 outputs and 72 deck control ports all packed into a compact 8 rack unit size!

\$14,995

Smart Videohub

Smart Videohub includes all the great features of Micro Videohub plus a built in control panel. Now you can change all routing with the push of a button! Smart Videohub includes 16 x 16 SDI, 3 Gb/s SDI, auto SD/HD/3 Gb/s SDI, re-clocking, ethernet, USB and serial router control interfaces. Great first router that's incredibly easy to use. Plus you can expand it's power with all the exciting Videohub control!

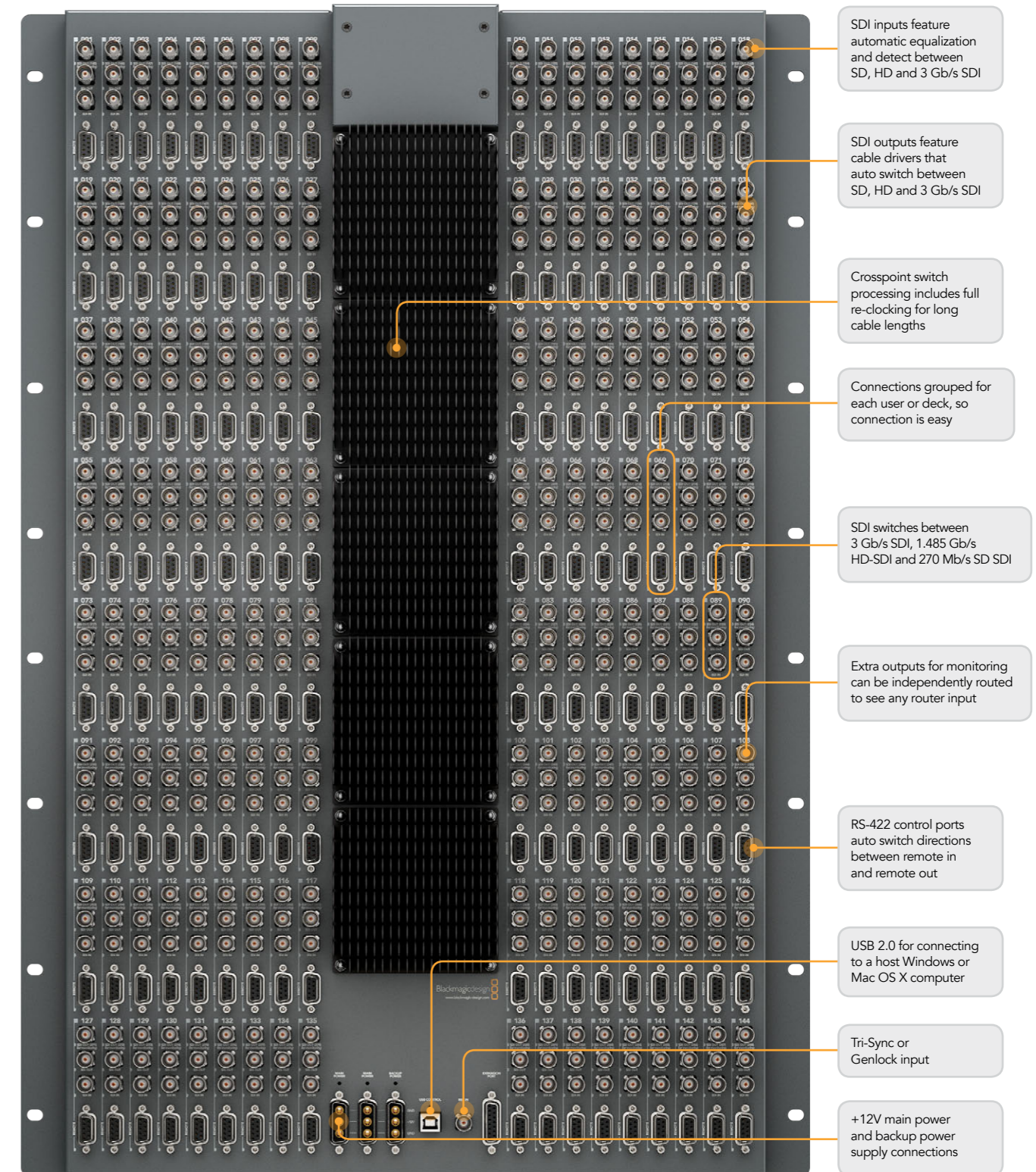
\$2,495

Universal Videohub

Build your own router! Universal Videohub lets you add SDI interface cards and cross-points for a fully redundant design that keeps working 24/7. With no electronic components on the router motherboard, every single part can be replaced simply by hot-plugging cards. Cross-points are monitored constantly and instantly change when a fault is detected!

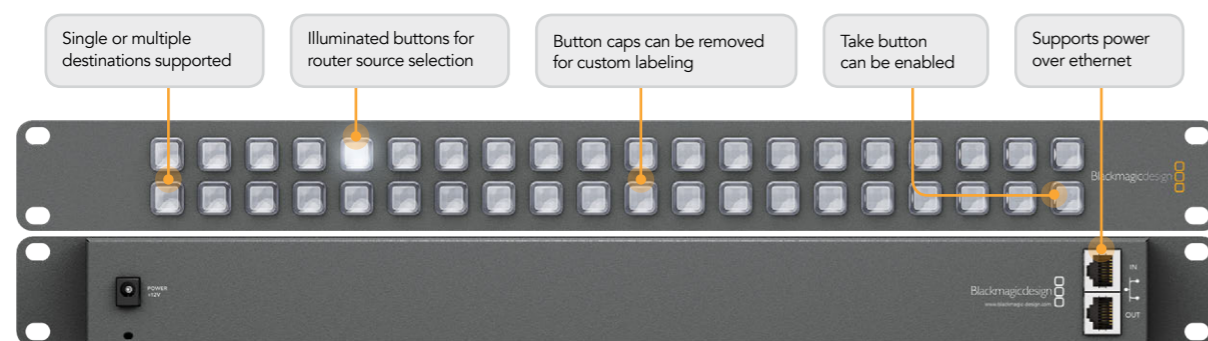
Micro Videohub	Compact Videohub	Studio Videohub	Broadcast Videohub	Enterprise Videohub	Smart Videohub
Connections					
SDI Video Input: 16 x SDI/HD-SDI, 3Gb/s SDI and ASI.	SDI Video Input: 40 x SDI/HD-SDI, 3Gb/s SDI and ASI.	SDI Video Input: 16 x SDI/HD-SDI, 3Gb/s SDI and ASI.	SDI Video Input: 72 x SDI/HD-SDI, 3Gb/s SDI and ASI.	SDI Video Input: 144 x SDI/HD-SDI, 3Gb/s SDI and ASI.	SDI Video Input: 16 x SDI/HD-SDI, 3Gb/s SDI and ASI.
SDI Video Output: 16 x SDI/HD-SDI, 3Gb/s SDI and ASI with SDI re-clocking.	SDI Video Output: 40 x SDI/HD-SDI, 3Gb/s SDI and ASI with SDI re-clocking.	SDI Video Output: 32 x SDI/HD-SDI, 3Gb/s SDI and ASI with SDI re-clocking.	SDI Video Output: 144 x SDI/HD-SDI, 3Gb/s SDI and ASI with SDI re-clocking.	SDI Video Output: 288 x SDI/HD-SDI, 3Gb/s SDI and ASI with SDI re-clocking.	SDI Video Output: 16 x SDI/HD-SDI, 3Gb/s SDI and ASI with SDI re-clocking.
Multi Rate Support: Auto detection of SD, HD or 3 Gb/s SDI. Simultaneous routing of 2K, HD, SD video and DVB-ASI.					
Device Control: None	Device Control: 16 x bidirectional Sony™ compatible RS-422 deck control ports. Serial port directions are reversible.	Device Control: 72 x bidirectional Sony™ compatible RS-422 deck control ports. Serial port directions are reversible.	Device Control: 144 x bidirectional Sony™ compatible RS-422 deck control ports. Serial port directions are reversible.	Device Control: 144 x bidirectional Sony™ compatible RS-422 deck control ports. Serial port directions are reversible.	Device Control: None
Router Control: Use either RJ45 Ethernet or USB 2.0 high speed interface or Smart Control shared over IP network.	Router Control: USB 2.0 high speed interface or Smart Control shared over IP network.			Router Control: 32 buttons for local control of Videohub or use either RJ45 Ethernet or USB 2.0 high speed interface or Smart Control shared over IP network.	
Router Configuration: Use either RJ45 Ethernet or USB 2.0 high speed interface shared over IP network.	Router Configuration: USB 2.0 high speed interface shared over IP network.			Router Configuration: Use either RJ45 Ethernet or USB 2.0 high speed interface shared over IP network.	
RS-422 Control: 1 x input for controlling router crosspoint switching.	RS-422 Control: None			RS-422 Control: 1 x input for controlling router crosspoint switching.	
Updates: USB 2.0 high speed (480Mb/s) interface.					
Re-clocking: On all SDI outputs, auto switching between standard definition, high definition or 3 Gb/s SDI video.	Re-clocking: On all SDI inputs, auto switching between standard definition, high definition or 3 Gb/s SDI video.			Re-clocking: On all SDI outputs, auto switching between standard definition, high definition or 3 Gb/s SDI video.	
Reference Input: Blackburst and TriSync for SD, HD and 2K.					
Standards					
SD Format Support: 625/25 PAL and 525/29.97 NTSC.					
HD Format Support: 1080p23.98, 1080p23.98, 1080p24, 1080p24, 1080p25, 1080p25, 1080p29.97, 1080p29.97, 1080p30, 1080p30, 1080i50, 1080i50, 1080i59.94, 1080i60, 1080p50, 1080p59.94, 1080p60, 720p23.98, 720p24, 720p25, 720p25, 720p29.97, 720p30, 720p30, 720p50, 720p59.94, 720p60.					
2K Format Support: 2048 x 1556/23.98/24/25.					
SDI Compliance: SMPTE 259M, SMPTE 292M, SMPTE 296M, SMPTE 310M, SMPTE 425M-A, SMPTE 425M-B, ITU-R BT.656 and ITU-R BT.601.					
SDI Video Sampling: 4:2:2 and 4:4:4.					
SDI Video Rates: SDI video connections are switchable between standard definition, high definition and 2K. SDI switches between 270 Mb/s standard definition SDI, 1.5 Gb/s HD-SDI and 3 Gb/s HD and 2K SDI.					
SDI Color Precision: 4:2:2 and 4:4:4 10 bit.					
SDI Color Space: YUV, or RGB.					
SDI Metadata Support: Video payload identification ancillary data as per SMPTE 352M.					
SDI Audio Sampling: Television standard sample rate of 48 kHz and 24 bit.					
SDI Auto Switching: Automatically selects between SD-SDI, HD-SDI, 3 Gb/s SDI and DVB-ASI on each input so that each input can be running a different television standard.					
Extras					
Software Control: Router control included free for Windows™ and Mac OS X™.					
Firmware Upgrade: Via included firmware updater application.					
Installation: 1 rack unit size. Less than an inch deep.	Installation: 2 rack unit size. Less than an inch deep.	Installation: 2 rack unit size. Less than an inch deep.	Installation: 8 rack unit size. Less than three inches deep.	Installation: 16 rack unit size. Less than three inches deep.	Installation: 1 rack unit size. Less than an inch deep.
Power Supply: 1 x Universal power supply included. IEC power cable required.	Power Supply: 2 x Universal power supplies included. IEC power cables required. The second power supply is permanently connected and works as a redundant power source.	Power Supply: 1 x Universal power supply included. IEC power cable required.	Power Supply: 2 x Universal power supplies included. IEC power cables required. The second power supply is permanently connected and works as a redundant power source.	Power Supply: 3 x Universal power supplies included. IEC power cables required. The third power supply is permanently connected and works as a redundant power source.	Power Supply: 1 x Universal power supply included. IEC power cable required.
Power Fail Protection: Router connections preserved and restored instantly at power on independently of host computer.					
Product Warranty: 3 Year Limited Manufacturer's Warranty.					

Take a closer look at Enterprise Videohub



Universal Videohub 72	Universal Videohub 288	Smart Control
Connections		
SDI Video Input: Up to 72 x SDI/HD-SDI, 3Gb/s SDI and ASI. Can be BNC SDI or optical fiber SDI.	SDI Video Input: Up to 288 x SDI/HD-SDI, 3Gb/s SDI and ASI. Can be BNC SDI or optical fiber SDI.	
SDI Video Output: Up to 72 x SDI/HD-SDI, 3Gb/s SDI and ASI with SDI re-clocking. Can be BNC SDI or optical fiber SDI.	SDI Video Output: Up to 288 x SDI/HD-SDI, 3Gb/s SDI and ASI with SDI re-clocking. Can be BNC SDI or optical fiber SDI.	
Multi Rate Support: Auto detection of SD, HD or 3 Gb/s SDI. Simultaneous routing of 2K, HD, SD video and DVB-ASI.		
Device Control: Up to 72 bidirectional Sony™ compatible RS-422 deck control ports via breakout cable.	Device Control: Up to 288 bidirectional Sony™ compatible RS-422 deck control ports via breakout cable.	
Router Control: Use either RJ45 Ethernet or USB 2.0 high speed interface or Smart Control shared over IP network.		Control: 40 programmable buttons and RJ45 Ethernet used for remote control of routers over an IP network.
Router Configuration: Use either RJ45 Ethernet or USB 2.0 high speed interface shared over IP network.		
RS-422 Control: 1 x input for controlling router crosspoint switching.		
Updates: USB 2.0 high speed (480Mb/s) interface.		
Re-clocking: On all SDI outputs.		
Reference Input: Blackburst and TriSync for SD, HD and 2K.		
Standards		
SD Format Support: 625/25 PAL and 525/29.97 NTSC.		
HD Format Support: 1080p23.98, 1080PsF23.98, 1080p24, 1080PsF24, 1080p25, 1080PsF25, 1080p29.97, 1080PsF29.97, 1080p30, 1080PsF30, 1080i50, 1080i59.94, 1080i60, 1080p50, 1080p59.94, 1080p60, 720p23.98, 720p24, 720p25, 720p29.97, 720p30, 720p50, 720p59.94, 720p60.		
2K Format Support: 2048 x 1556/23.98/24/25.		
SDI Compliance: SMPTE 259M, SMPTE 292M, SMPTE 296M, SMPTE 310M, SMPTE 425M-A, SMPTE 425M-B, ITU-R BT.656 and ITU-R BT.601.		
SDI Video Sampling: 4:2:2 and 4:4:4.		
SDI Video Rates: SDI video connections are switchable between standard definition, high definition and 2K. SDI switches between 270 Mb/s standard definition SDI, 1.5 Gb/s HD-SDI and 3 Gb/s HD and 2K SDI.		
SDI Color Precision: 4:2:2 and 4:4:4 10 bit.		
SDI Color Space: YUV, or RGB.		
SDI Metadata Support: Video payload identification ancillary data as per SMPTE 352M.		
SDI Audio Sampling: Television standard sample rate of 48 kHz and 24 bit.		
SDI Auto Switching: Automatically selects between SD-SDI, HD-SDI, 3 Gb/s SDI and DVB-ASI on each input so that each input can be running a different television standard.		
Extras		
Software Control: Router control included free for Windows™ and Mac OS X™.		
Firmware Upgrade: Via included firmware updater application.		
Installation: 5 rack unit size. Less than 6 inches deep.	Installation: 18 rack unit size. Less than 6 inches deep.	Installation: 1 rack unit size. Less than an inch deep.
Power Supply: Redundant power supply options are available. GPI alarm for connecting external alarms.		Power Supply: 1 x Universal power supply included with international socket adapters for all countries.
Power Fail Protection: Router connections preserved and restored instantly at power on independently of host computer.		
Product Warranty: 3 Year Limited Manufacturer's Warranty.		Product Warranty: 1 Year Limited Manufacturer's Warranty.

Take a closer look at Smart Control



Take a closer look at Universal Videohub 288

