

Delivering the power of LED Fresnels to today's mobile user

The latest addition to Litepanels' award-winning line of LED Fresnels, the Caliber is a Daylight balanced true Fresnel fixture with wide focus range that can be powered via DC with AA or professional camera batteries. Each Caliber LED Fresnel offers a output comparable to a 150W tungsten yet requires only 17W to power it. The Caliber's rugged aluminum chassis design provides a battery compartment for a true mobile lighting solution and dissipates heat ensuring color quality over the life of the LED. The lights compact size and high intensity output make it a valuable production tool in the field.

Available individual or in a 3-light Kit, the Litepanels Caliber is a portable, out-of-the-box lighting solution that today's professional videographers have been seeking. Ideal for webcasting, blogging and professional content creators, the compact Caliber 3-Light Kit enables easy travel and fast setup.

Weighing in at less than 13 pounds, each kit contains (3) Caliber LED Fresnel, (3) AC Adapters with international plug sets, (3) JOBY® flexible GorillaPods, and a compact stand with stand adapter offering additional placement options. Everything comes packaged in a fully customizable soft case, with plenty of additional storage space for batteries, camera lenses and other items.

CALIBER KIT ADVANTAGES

- Lightweight kit is ideal for location setups and travel
- JOBY® GorillaPod allow the lights to be fixed in a number of positions
- A true Fresnel fixture that produces soft, directional illumination
- Flicker-free at any frame rate or shutter angle
- Ultra-smooth dimming from 100% to 0, with no noticeable color shift throughout the entire range
- Configurable soft case allows for easy customization
- Low power draw means the portable lights can run anywhere light is needed, on AA batteries or via AC (light is 20% brighter when run on AC)
- 17W power draw with output comparable to a 150W Tungsten
- Durable rugged aluminium chassis design
 - Serve as a battery compartment for mobile lighting
 - Provides efficient thermal management to ensure color quality and long life
- Premium selected high CRI/TLCI rated LEDs - Daylight 93



CALIBER SINGLE LIGHT:

- Caliber LED Fresnel
- JOBY® flexible GorillaPod
- Gel Frame
- Gel Set (1/2 CTO & 1/2 CTB)
- 4-way Barndoors
- AC Adapter with International Plug Set

CALIBER 3-LIGHT KIT INCLUDES:

- (3) Caliber LED Fresnels
- (3) JOBY® Flexible GorillaPod
- (3) Gel Sets (1/2 CTO & 1/2 CTB)
- (3) Gel Frames
- (3) 4-Way Barndoors
- (3) AC Adapter with International Plug Set
- (1) Compact Light Stand
- (1) Stand Adapter
- (1) Ball Head Shoe Mount
- (1) Soft Case with Customizable Interior Compartments



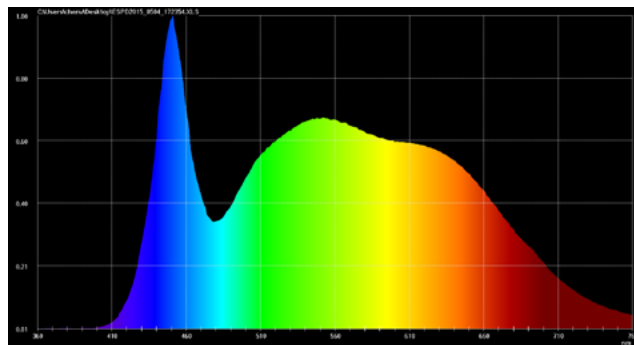
Litepanels Caliber

CALIBER 3-LIGHT KIT SPECIFICATIONS

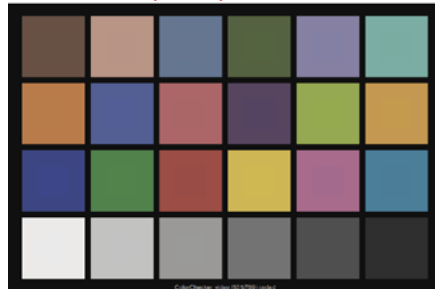
Case Dimensions: 16.5 x 10.5 x 12" / 42 x 26.7 x 30.5 cm
Kit Weight: Just under 13 lbs / 6 kg

CALIBER SPECIFICATIONS

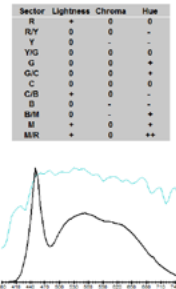
Color Temperature: Daylight
Beam Angle: 15° - 73°
Fresnel Lens: 2" / 5cm
Size Flood: 9.6 x 3 x 3" / 24.4 x 7.6 x 7.6 cm
Size Spot: 8.8 x 3 x 3" / 22.4 x 7.6 x 7.6 cm
Weight: 1.3 lbs / .59 kg
Maximum Power Draw: 17W
Power Requirements: 6-12VDC
Power Supply: AC/DC 120-240 VAC
 DC Power via six (6) AA batteries



Caliber half flood 0: CCT = D5435 (-0.4)
TLCI-2012: 93 (D5435)



Television Lighting Consistency Index-2012



CALIBER PHOTOMETRICS DATA

Measured using the AC adapter. Unit is 20% less bright when using AA batteries.

		Distance	6ft [1.8m]	9ft [2.7m]	12ft [3.7m]
SPOT BEAM ANGLE 15°	Beam Diameter		1.6 ft [0.5m]	2.4 ft [0.7m]	3.2 ft [1.0m]
	Footcandles [Lux]		195 fc [2097 lx]	87 fc [932 lx]	49 fc [524 lx]
	Field Diameter		2.6 ft [.8m]	4.0 ft [1.2m]	5.3 ft [1.6m]
FLOOD BEAM ANGLE 73°	Beam Diameter		9.0 ft [2.7m]	13.3 ft [4.1m]	17.8 ft [5.4m]
	Footcandles [Lux]		21 fc [225 lx]	9 fc [100 lx]	5 fc [56 lx]
	Field Diameter		12.5 ft [3.8m]	18.7 ft [5.7m]	25 ft [7.6m]



The Litepanels Difference

- Full spectrum quality soft light, with visually accurate color temperature
- The widest variety of LED fixtures available, with flexible AC or DC power options
- Smooth dimming from 100% to 0, with no noticeable color shift
- Flicker-free performance at any frame rate or shutter angle
- Controlled current and thermal management for long LED life
- Efficient power management delivers low power consumption and enhanced reliability
- Engineered and designed in Los Angeles, CA



Litepanels, a Vitec Group brand, was founded in 2001 by five professional gaffers and engineers who saw the future and pioneered LED (light emitting diode) lighting for motion pictures, television, and the audio-visual industry. Their Emmy® award-winning technology has now been used on thousands of productions worldwide and is trusted by the world's leading broadcast organizations. Litepanels continues to

expand its suite of flicker-free, color accurate, fully-dimmable soft lights that talent and lighting directors admire. These environmentally friendly fixtures can pay for themselves with power savings and long life, setting a new standard in professional lighting.