

CARTONI
PROFESSIONAL CAMERA SUPPORT



MASTER
30 ✓

USER'S MANUAL
&
MAINTENANCE

CARTONI® / All rights reserved ©

Manual Version: 1.0

Issue date: May 2019

CARTONI S.p.A

Via di Portonaccio, 33/B - 00159 Rome (Italy)

Phone +39 06 4382002

Fax +39 06 43588293

Email cartoni@cartoni.com

www.cartoni.com

RINA

CERTIFICATO N. **19714/09/S**
CERTIFICATE No.

SI CERTIFICA CHE IL SISTEMA DI GESTIONE PER LA QUALITÀ DI
IT IS CERTIFIED THAT THE QUALITY MANAGEMENT SYSTEM OF

CARTONI S.P.A.

VIA DI PORTONACCIO, 33/B 00159 ROMA (RM) ITALIA

IN THE FOLLOWING OPERATIVE / IN THE FOLLOWING OPERATIONAL UNITS

VIA DI PORTONACCIO, 33/B 00159 ROMA (RM) ITALIA

IN CONFORMITY WITH THE STANDARD
ISO 9001:2015

FOR THE FOLLOWING AREAS OF ACTIVITY / FOR THE FOLLOWING AREAS OF ACTIVITY

PROGETTAZIONE, FABBRICAZIONE ED ASSISTENZA POST-VENDITA DI PRODOTTI PER LA CINEMATOGRAFIA E LA TELEVISIONE PROFESSIONALE. COMMERCIALIZZAZIONE DI PRODOTTI ED ACCESSORI IN CONCESSIONE PER LA CINEMATOGRAFIA E LA TELEVISIONE PROFESSIONALE

DESIGN, MANUFACTURE AND POST-SALE ASSISTANCE OF PROFESSIONAL BROADCASTING AND FILM EQUIPMENT. MARKETING, COMMERCIALIZATION AND ACCESSORIES IN CONCESSION FOR BROADCASTING AND PROFESSIONAL TELEVISION

La validità del presente certificato è subordinata a esecuzioni periodiche annuali e semestrali ed al rispetto completo del sistema di gestione con periodicità biennale
The validity of this certificate is dependent on the annual / semi-annual audits and on the complete respect of the management system with a biennial periodicity

Prima emissione / First Issue	12.06.2009	Data scadenza di rinnovo / Renewal expiration date	24.06.2018
Data re emissione / Expiry Date	02.06.2021	Data rinevisione / Revision date	24.06.2018

Autore Tecnico
Rome Management System
Certification, snc

Antonio Caronini

RINA Services S.p.A.
Via Conca 12 - 16128 Genova, Italy

ACCREDIA
5500 N° 002 A

IAF

CISQ
www.cisq.com

CISQ è la Federazione Italiana di Organismi di Certificazione dei sistemi di gestione aziendale
CISQ is the Italian Federation of Management System Certification Bodies

CISQ is a member of
IONet
The International Certification Network
www.ionet-certification.com

For information on the validity of the certificate, you can visit the site www.rina.org

For information concerning the validity of the certificate, you can visit the site www.cisq.com

Per informazioni sulla validità del certificato, potete visitare il sito www.rina.org

Per i requisiti della norma non applicabili al campo di applicazione del sistema di gestione, consultate le informazioni documentate ricevute.

Reference is to be made to the relevant documents of information for the requirements of the standard that cannot be applied to the organization management system scope.

Index

1. Introduction.....	1
2. Operating elements.....	2
3. Procedures.....	5
4. Specifications.....	6
5. Maintenance.....	6
6. Warranty.....	7
7. Accessories & product line	7

1. Introduction

In Broadcast and Studio configuration the new CARTONI MASTER 30 head covers the needs of sophisticated video shooters from 3 kg (7 lbs) to 30 kg (66 lbs).

With a low center of gravity configuration such as with Teleprompter, MASTER 30 holds 40 kg (88 lbs).

An exceptional new fluid module in both pan and tilt modes ensures smooth movements, with perfect starts and stops, the drag system allows a wide variety from almost freewheeling in fast action movements to maximum resistance for perfect long focal shoots.

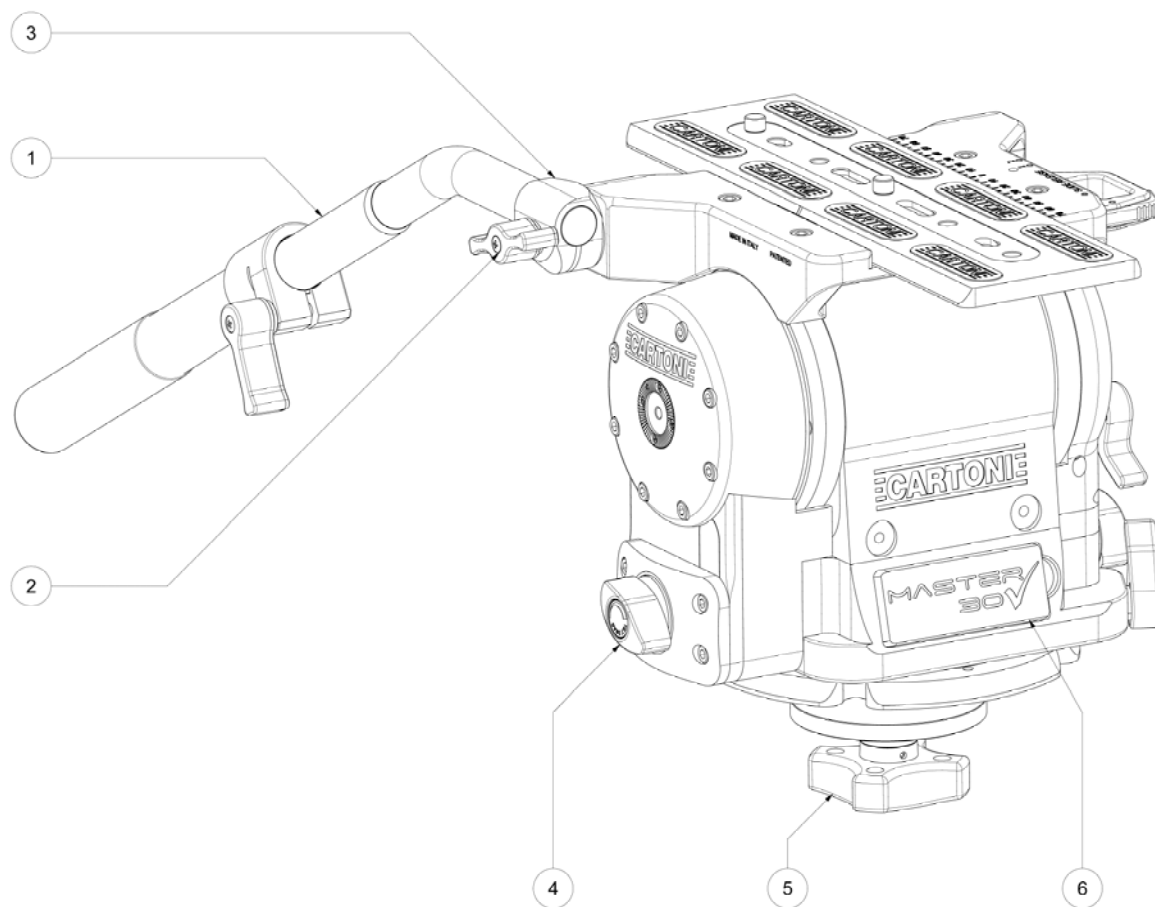
Counterbalance performs perfect balance at any angle from 0 to +/- 90 degrees.

All operating knobs and levers are conveniently located and easy to reach with a special care for ergonomics.

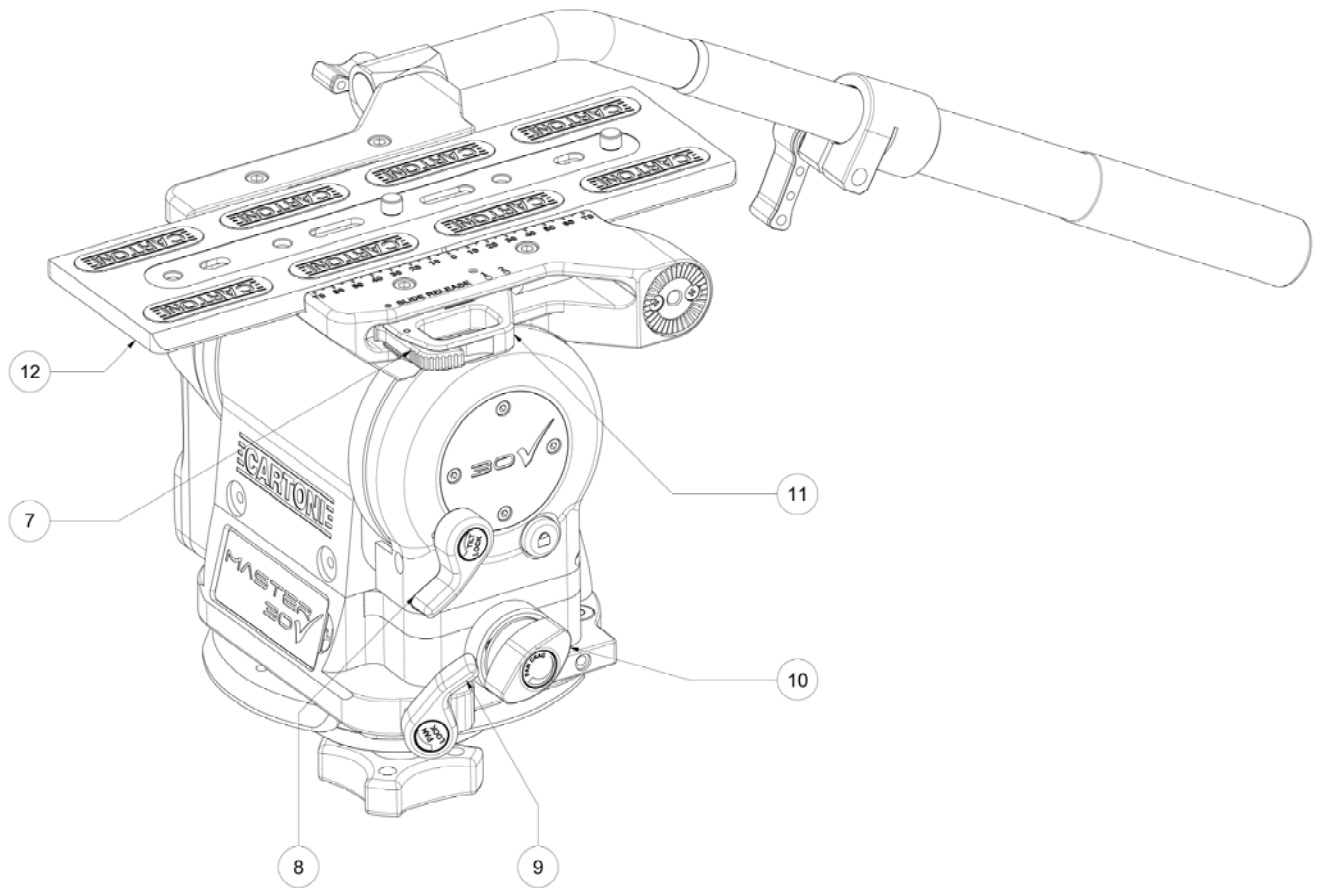
The head comes equipped with dual telescopic pan bars, illuminated spirit level and digital readouts for drag control and counterbalance settings.

- Before using the MASTER 30 Fluid Head, please make sure to read this user's manual & maintenance;
- Before installing the Fluid Head on the tripod check the tripod stability;
- Check that the Camera payload (including lenses and accessories) is lower than the maximum capacity of the MASTER 30 Fluid Head;
- Before installing the Camera make sure the MASTER 30 is in good conditions and bares no evident damages.

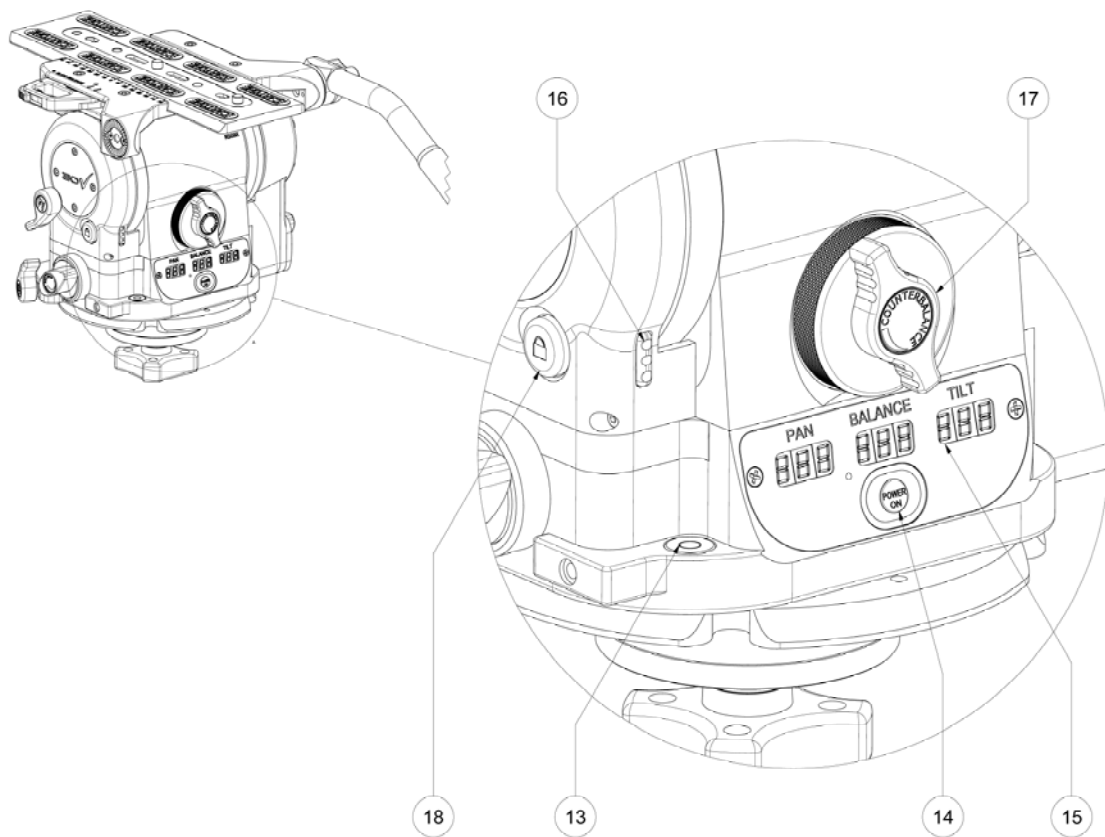
2. Operating elements



- 1) Pan bar
- 2) Pan bar attachment lever
- 3) Pan bar attachment rosette
- 4) Tilt drag selector
- 5) Tie-down knob
- 6) Battery housing



- 7) Safety button slide lock lever
- 8) Tilt lock lever
- 9) Pan lock lever
- 10) Pan drag selector
- 11) Slide lock lever
- 12) Camera plate



- 13) Illuminated bubble level
- 14) Illuminated bubble level and display light button
- 15) Digital display
- 16) Horizontal lock button (Off)
- 17) Counterbalance selector
- 18) Horizontal lock button (On)

3. Procedures

- Open the tripod to the desired height and lock all safety knobs.
- Place the MASTER 30 Fluid Head on the tripod base and rotate until it matches the steel notch; tighten the Head firmly by screwing in the knob (5) underneath the flat base. Check the illuminated bubble level (13) and modify the legs angle if needed. In case of low visibility, press button (14) for illuminated bubble level and to activate the digital displays. Lights will turn off automatically after approximately 30 seconds.
- Lock the horizontal position with button (18), insert pan lock (9) and turn both tilt drag selector (4) and counterbalance selector (17) to position "0".
- To release the Camera plate (12) push the red safety button (7) and open the slide lock lever (11) completely till to position 2, then remove the Camera plate.
- Attach the Camera plate under the Camera assembly and firmly secure it with both screws. Try to place the Camera plate centered under the Camera system, keeping in mind the position of the center of gravity (CG).
- Place the Camera on the top of the MASTER 30, leaning sideways against the left side of the head (slide lock side), then push the assembly into horizontal position until you feel the click of the slide lock lever (11), which will be in position 1 (at this point the Camera plate is clamped but still moving fore-and-aft).
- Holding the pan bar (1) firmly, disengage horizontal lock with button (16) and find the correct center of gravity (CG) sliding the Camera assembly fore-and-aft. Lock the slide lock lever (11) in position 0.
- Set the counterbalance system by turning the counterbalance selector (17) to the appropriate tension. The Camera has to stay still at any tilt angle. If needed, fine tune the balance by adjusting the sliding plate.
- Push button (14) to activate illuminated digital displays, unlock Pan lock (9) and select the desired Fluid drag intensity on both Pan and tilt by turning Pan selector (10) and tilt selector (4).

4. Specifications

Minimum payload	3 Kg – 7 lbs
Maximum payload	30 Kg – 66 lbs
Weight	10,5 Kg – 23,1 lbs
Bowl diameter	Flat base
Fluid control	Continuous
Counterbalance	Continuous
Pan range	360°
Tilt range	+/- 90°
Temperature range	-40 / +60 °C -40 / +140 °F

5. Maintenance

When needed, with indoor use just clean the Head and Tripod with a soft cloth. Dirt accumulated during storage may be removed using a brush or Air spray.

CARTONI products main mechanisms are sealed as they are also built for professional outdoor use.

However, use under rough conditions they will require special care. Salt water is very corrosive and can cause extreme damages. In attempt to avoid further damage the Fluid Head should be washed off with fresh water at the earliest opportunity and perfectly dried before storage.

Sand and dirt are abrasive and should be removed using a semi-stiff brush or Air spray.

Disconnect the illuminated display & bubble level battery during long term storage; for battery replacement access the battery compartment (6).

6. Warranty

All CARTONI Fluid Heads & Pedestals have a free of charge three (3) year warranty. Register your product at www.cartoni.com within 30 days from date of first purchase/invoice to receive further two (2) year warranty for the unsurpassed free five (5) year warranty.

Tripods, spreaders, dollies and all accessories are guaranteed one (1) year from the date of first purchase/invoice.

CARTONI warrant that the product supplied will - under proper use - be free from defects in workmanship and materials and agrees that it will, at its option, either repair or replace any defective part within duration of warranty from date of first purchase with no labour charge.

This warranty does not apply to any CARTONI product that has been damaged in shipping or handling, abused, misused, operated contrary to instructions for use, neglected, normal wear or tear, modified or changed in design or construction or serviced by unauthorized parties.

Repairs or misuse by any unauthorized parties will void this warranty.

Warranty claims must be submitted – in writing - to the factory for verification or to an authorized distributor/dealer designated by CARTONI.

It is the end user's responsibility when ordering to ensure that the products ordered conform to his requirements.

All freight of product to CARTONI must be prepaid. All implied warranties are limited to the time period set forth herein & subject to change without notice.

No liability can be accepted for any variation.

7. Accessories & product line

For the complete Accessories list & Product line please visit CARTONI's official website www.cartoni.com.

Every product has an updated list of compatible items sorted by groups, with descriptions and technical data.