

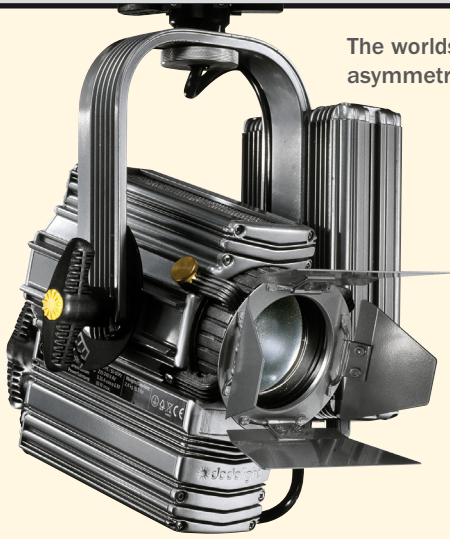


# LICHTQUELLEN UND KONZEPTE DER LICHTTECHNIK

DEDICATED TO THE ART OF LIGHTING

dedolight

PRECISION LIGHTING INSTRUMENTS



The worlds first asymmetric focusing light

Donnerstag, **27.05.2010**

Beginn: **11:00 Uhr**

Dauer: **3,5 Std.**

Filmakademie Baden-Württemberg

Akademiehof 10

Studio 2

71638 Ludwigsburg

Anmeldungen bitte an: [khoelzl@dedoweigertfilm.de](mailto:khoelzl@dedoweigertfilm.de)

200W Tungsten 200W Daylight



Ledzilla



Fillini



Fillini Plus



DLOBA²



DLH4



DLHM4-300



DLHM4-300SE

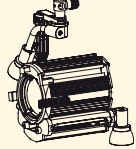


DLHM4-300-DMX

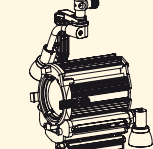


DLH200DT

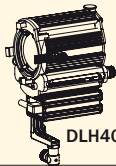
## DOUBLE ASPHERIC SERIES (PAT.)



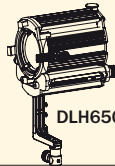
DLH650PO



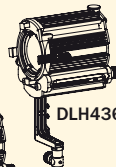
DLH650PO-DMX



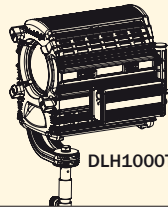
DLH400DT



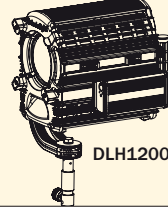
DLH650



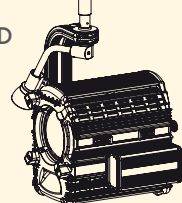
DLH436



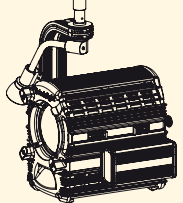
DLH1000T



DLH1200D



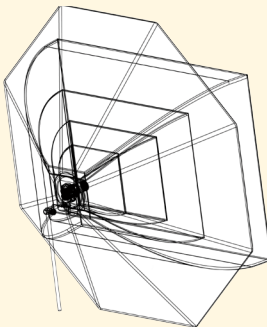
DLH1000TPO



DLH1000TPO-DMX

## DAYLIGHT & TUNGSTEN DMX POLE OPERATED

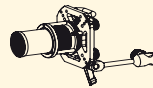
## 9 PERFECT SOFT-LIGHTS



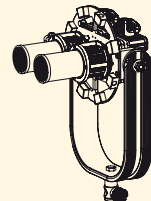
DLH1X150S



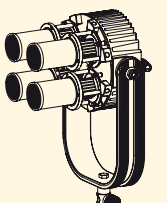
DLH300S



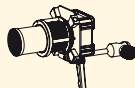
DLH1000S



DLHPA7x2DT



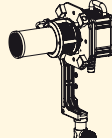
DLHPA7x4T



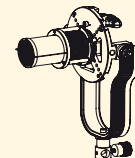
DLH200S



DLH4X150S



DLH400S



DLH1000SPUS

## PROJECTION / IMAGING



DPL60M



DP1



DPLZ120M



DP2



DPLZ150M



DP3



DP400-70



DP400LFS



DP400IR



DP400SH



DP400-150



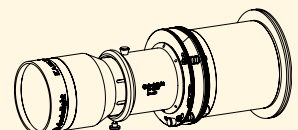
DP400FS



DP400GR



DP400GH



DP400

# LICHTQUELLEN UND KONZEPTE DER LICHTTECHNIK

- \* Verschiedene Lichtquellen, Charakteristik und Einsatzmöglichkeiten
- \* Verschiedene dedolight Systeme – die Technologie – die Wirkung
- \* Einsatzmöglichkeiten im Spielfilm, TV-Studio, Special Effects
- \* Auch das Portable Studio-System für die Arbeit im kleinsten Team
- \* Präzisionsgeräte, Akzente, Effekte
- \* Dedicated Softlights – die PanAura-Serie

Donnerstag, **27.05.2010**

Beginn: **11:00 Uhr**

Dauer: **3,5 Std.**

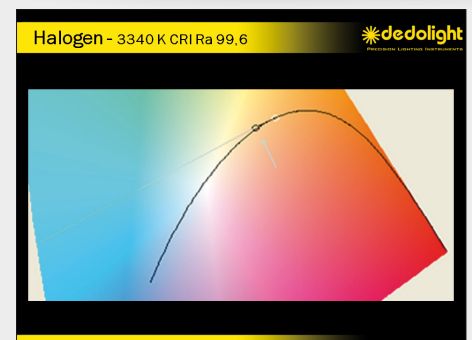
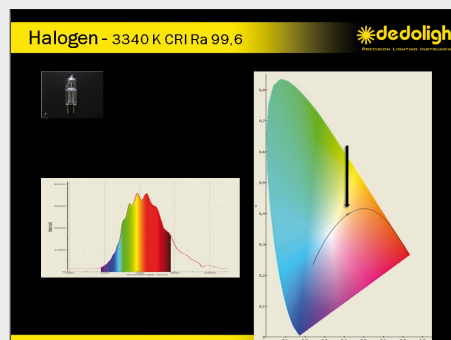
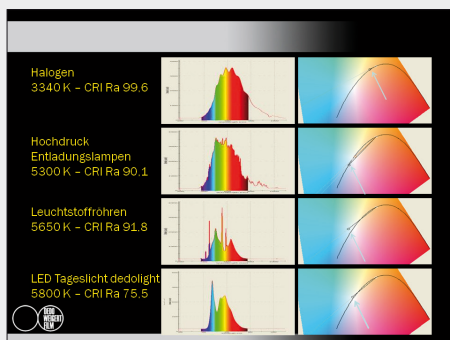
Filmakademie Baden-Württemberg

Akademiehof 10

Studio 2

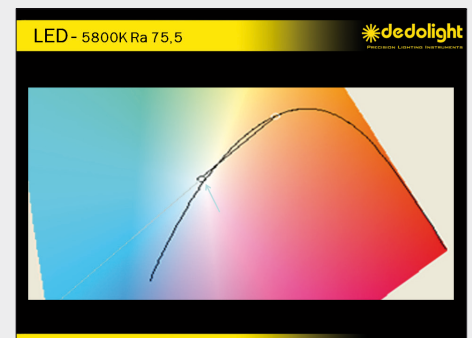
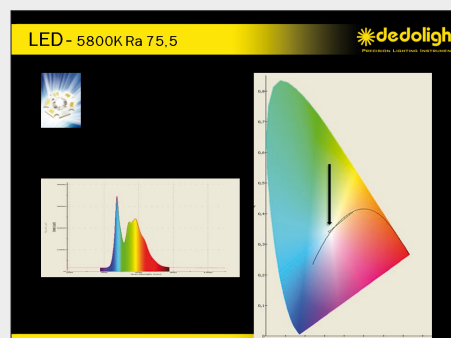
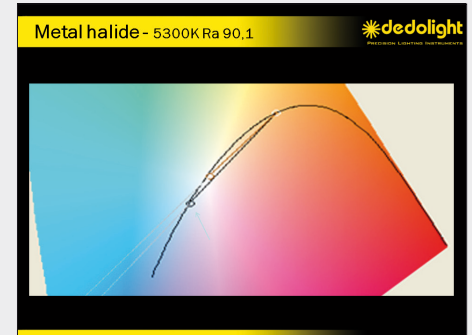
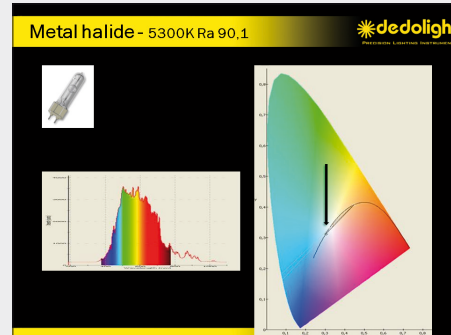
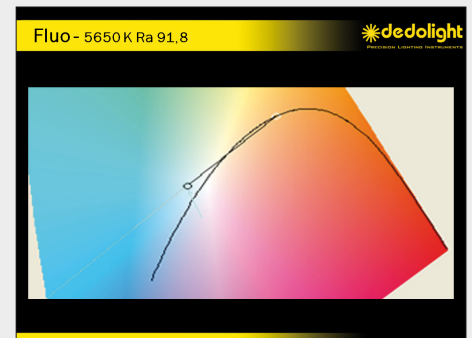
71638 Ludwigsburg

Anmeldungen bitte an: [khoelzl@dedoweigertfilm.de](mailto:khoelzl@dedoweigertfilm.de)



## Verschiedene Lichtquellen:

- \* Halogen
- \* Tageslicht
- \* Kunstlicht
- \* Keramik-LED
- \* Leuchten
- \* Optische Konzepte
- \* Präzisionsleuchten
- \* Vorstellung neuer Systeme
- \* Effect-Imaging und Projektionen
- \* Light Control tools
- \* Softlight-Konzepte
- \* Studiosysteme
- \* Special Effects
- \* Portable Studio Solution
- \* Die Grundlagen
- \* Die Technologie
- \* Eigenschaften und Anwendung







BarFly



VistaBeam

Freitag, **28.05.2010**

Beginn: **11:00 Uhr**

Dauer: **3,5 Std.**

Filmakademie Baden-Württemberg

Akademiehof 10

Studio 2

71638 Ludwigsburg

Anmeldungen bitte an: [khoelzl@dedoweigertfilm.de](mailto:khoelzl@dedoweigertfilm.de)



4Bank



Desk-Lite



VistaSingle



DivaLite

## PORTABLE STUDIO KONZEPT

Zielgruppe: Das kleine Videoteam

- \* nie genug Zeit
- \* zu wenig Hände
- \* zu viel Gerät
- \* und dennoch gutes Licht setzen.

Unmöglich?

- \* Zeigen, wie es geht.

Portable Studio – das 12-Minuten-Konzept

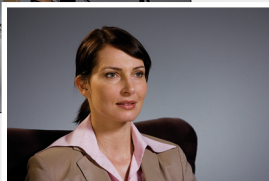
- \* halbes Gewicht
- \* halbe Größe
- \* mehr Licht
- \* vielseitig
- \* unkaputtbar

**Make work light  
Make light work**



### 3 LEUCHTEN-KIT - SOFTCASE

Code: SPS3



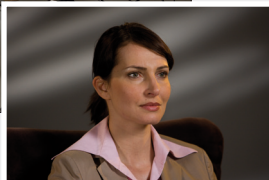
### 4 LEUCHTEN-KIT - RUCKSACK

Code: BPS4



### 5 LEUCHTEN-KIT

Code: SPS5



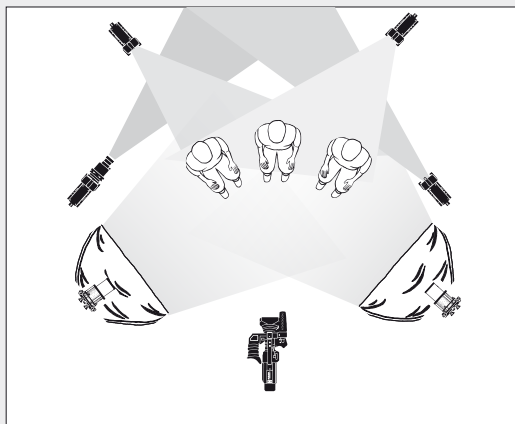
### 4 LEUCHTEN-KIT - SOFTCASE

Code: SPS4



### 6 LEUCHTEN-KIT

Code: SPS6

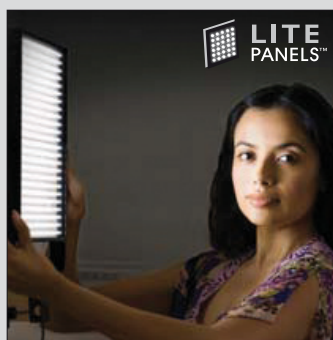


### 3 LEUCHTEN-KIT - RUCKSACK

Code: BPS3



## LED LIGHTS



LITE  
PANELS™



GIZMO  
TECHNOLOGY LTD



dedolight  
LEDZILLA



FILLINIPLUS  
TECPRO



### Dedo Weigert Film GmbH

Karl-Weinmair-Straße 10  
80807 München  
Telefon: 089 356 16 01  
Fax: 089 356 60 86

www.dedoweigertfilm.de  
www.portablestudio.de  
www.ledzilla.de  
info@dedoweigertfilm.de

