

Litepanels 1x1™

Models: 5600°K Flood • 5600°K Spot • 3200°K Flood • 5600°K Super-Spot



The 1x1™ is the most versatile production light ever built. Combining Litepanels' hallmark LED technology in a sophisticated, slimline housing, these revolutionary modular lights provide 1'x1' of pure, luminous, soft, directional output.

Highly Controllable

The 1x1 shares many of the technical innovations designed by Litepanels to give you an unmatched level of lighting control. An ergonomic control knob on the back enables instant dimming from 100% to 0 with minimal color shift. Absolutely silent, flicker free and heat free, the system can be positioned comfortably



Dial in 100% to 0 dimming with minimal color shift

close to a subject's face, filling it with an unmatched quality of soft, wrap-around light. For even more control, a set of 6 interchangeable slide-in conversion and diffusion filters is available in various configurations for both daylight and tungsten versions. Filters also sold individually.

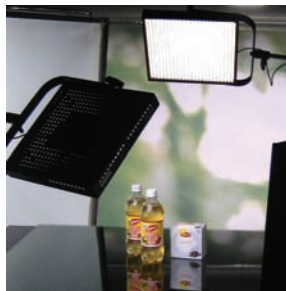
Power Efficient

Employing Litepanels' ultra-efficient LEDs, the system draws just 40 Watts @ 24V, yet outputs the equivalent of 500 Watts. The 1x1 is powered via an external 100-240VAC international adapter, which provides 24VDC to the unit. The 1x1 can also run off a variety of 18-28VDC sources, including a standard camera battery, car battery, or the optional Backpack PowerCell.

Square Deal

Designed for quick and easy set up and operation, Litepanels 1x1 measures just 12" (30.48 cm) square, has a thickness of only 1.75" (44mm), and weighs a mere 3 lbs. (1.36 kg). This ultra-flat profile, lightweight system adapts readily to a variety of lighting situations. The unit mounts easily on a light stand or tripod via a yoke with standard TVMP receptacle. Coupled with dedicated mounting hardware, the modular housing enables a variety of multi-panel configurations such as 2'x1', 2'x2', 3'x2', 4'x4'— making the units able to fit a wide range of jobs.

In addition, Litepanels' groundbreaking design provides operators with a unique view-thru capability. The housing features an integrated pattern of hundreds of precisely aligned mini-portals. This offers the ability to view the subject being illuminated from behind the unit.



The versatile 1x1 offers a multitude of applications from product commercials to episodic television

Litepanels 1x1 Bi-Color™

All in one: Control Tungsten & Daylight

Finally, ultimate color control right at your fingertips. A soft, high output light that lets you quickly dial up any color—from cool white daylight to warm white tungsten. The Litepanels 1x1 Bi-Color flood lets you adjust color temperature instantly so you can adapt to different shooting conditions and skin tones on the fly. Like all Litepanels 1x1 lights, the Bi-Color has a full-range dimmer, remains cool to the touch, runs on AC or an optional snap-on battery, and produces a great, soft-wrapping light quality.

Litepanels 1x1 Bi-Focus™

All in one: Control Spot & Flood

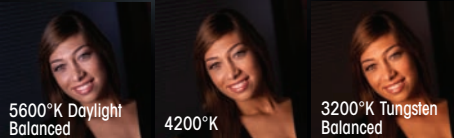
Litepanels brings you the world's first electronic spot and flood light. So game changing that it's patented. The revolutionary 1x1 Bi-Focus features variable beam angle—either Flood/Spot or Spot/Super-Spot—all in a single 1'x1' square fixture. With a simple turn of a dial, you can achieve infinitely variable flood or spot output. All in a 3 pound, cool-to-the-touch, super-thin, fit-anywhere fixture.



Litepanels Bi-Focus offers variable beam angles

Litepanels® 1x1 Bi-Color & Bi-Focus both feature:

- Extreme Portability
- Dial-up brightness
- Runs on battery or AC
- 1'x1' square, 1.75" thick
- Cool to the touch
- Ultra-lightweight, 3 lbs. (1.36 kg)
- Integrated DMX (new)
- Fits where other lights cannot go
- Snap-on battery option for wireless lighting
- Draws under 10% power of conventional lights



Multiple Options

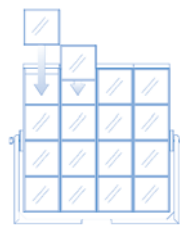
Litepanels 1x1s are available as single daylight or tungsten fixtures. Optional accessories, including Litepanels' Backpack PowerCell, DMX modules, battery adaptor plates for Gold-Mount or V-Mount style batteries and optional correction/diffusion gels, may be purchased separately. All 1x1s include the following: Fixture, Yoke, AC Power Supply with power cord and a Power Supply Mounting Bracket.

Specifications

Size: 12" W x 12" H x 1.75" D (30.48 cm x 30.48 cm x 4.4 cm)
 Weight: 3 lbs. (1.36 kg)
 Power Draw: 40 Watts @ 24V, 45 Watts @ 12V
 Power Supply: 18-28V, AC Adapter 100-240V

Advantages

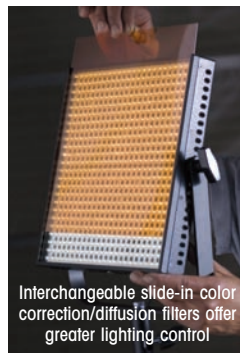
- Only 1.75" (44 mm) thick
- Ultra-lightweight & portable
- 12" (30.48 cm) square
- Runs on AC adapter or battery
- Heat free & flicker free
- Dims 100% to 0 with minimal color shift
- Remote dimmer available
- Modular design for multipanel configuration
- 5600°K daylight or 3200°K incandescent versions
- 50,000+ hours of LED life
- View-thru to see the talent
- Litepanels award-winning LED technology
- Optional Backpack PowerCell (1.75 hrs.)
- Ballast free



Modular Litepanels 1x1 can be combined to form larger panels such as 2'x2', 4'x4', etc.



HD Friendly Studio Lighting



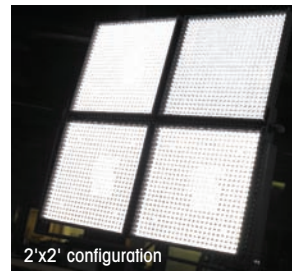
Interchangeable slide-in color correction/diffusion filters offer greater lighting control



Mounts easily on stands via yoke with standard TVMP Receptacle



New Litepanels 2x1 with optional 2'x1' barndoors. Please inquire about 3'x1'.



2'x2' configuration



4'x4' configuration

Litepanels Backpack PowerCell

Litepanels' innovative Backpack PowerCell mounts easily and unobtrusively on the rear of the Litepanels 1x1. The unit attaches in seconds to provide up to 1.75 hours of run time. A handy battery charger unit restores the PowerCell to 80% capacity in just over an hour. With a thickness of 1" (2.54cm), and measuring 3.5" by 11" (10.2cm x 27.9cm), the 1.5 lb. (.68kg), ultra-thin PowerCell lets you position the light virtually anywhere. Also runs the Ringlite™ Mini.



Wireless lighting without generators & power cables.



Four-Lite rolling Carrying Case with built-in trolley for up to 4 each 1x1s and accessories



Optional accessories for 1x1s include barndoors & honeycomb lighting grids in 30°, 45°, 60° & 90°

Remote Dimming Module

By using Litepanels' optional wired Remote Dimming Module, operators can override the 1x1 on-board dimmer at distances up to 25 feet, an invaluable capability when the situation calls for adjustments in intensity made away from the light fixture itself.

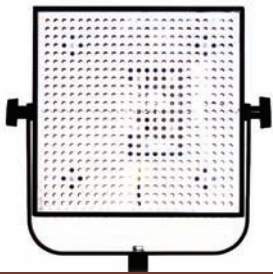


Wired Remote Dimming Module or DMX interface available.



Litepanels lets you dial up lighting ratios via their integrated dimmer with minimal color shift, something you can't do with fluorescent fixtures!

LITEPANELS 1X1 STANDARD: AVAILABLE IN 5600°K FLOOD & SPOT, AND 3200°K FLOOD



The Workhorse—Battery & AC powered 1x1
 Litepanels' lightweight, ultra-flat profile 1x1 is the most versatile production light ever built. Designed for quick set up and operation, the fixture mounts easily overhead—or elsewhere—to bathe a studio in soft, directional, luminous output. Its modular housing can be combined into 2'x2' and 4'x4' multi-panel configurations to fit a wide range of jobs. What's more, the 1x1's optional snap-on battery allows for location shooting without generators or power cables.

Flood Models
Distance
 4 ft. / 1.2M
 8 ft. / 2.4M
 12 ft. / 3.6M

Footcandles
 130 FC
 34 FC
 14 FC

LUX
 14 00 LUX
 370 LUX
 160 LUX

5600° K Spot
Distance
 4 ft. / 1.2M
 8 ft. / 2.4M
 12 ft. / 3.6M

Footcandles
 160 FC
 52 FC
 20 FC

LUX
 17 00 LUX
 560 LUX
 210 LUX

LITEPANELS 1X1 BI-COLOR: VARIABLE COLOR TEMPERATURE



All in one—Control Tungsten & Daylight
 Litepanels Bi-Color™ gives you ultimate color control at your fingertips. A soft, high output light that lets you quickly dial up any color—from cool white daylight to warm white tungsten. It lets you adjust color temperature instantly so you can adapt to different shooting conditions and skin tones on the fly. Like all Litepanels 1x1 lights, the Bi-Color has a full-range dimmer, remains cool to the touch, runs on AC or an optional snap-on battery, and produces a great, soft-wrapping light quality.

Distance
 4 ft. / 1.2M
 8 ft. / 2.4M
 12 ft. / 3.6M

Footcandles
 130 FC
 34 FC
 14 FC

LUX
 14 00 LUX
 370 LUX
 160 LUX

LITEPANELS 1X1 BI-FOCUS: VARIABLE FLOOD/SPOT (50°/30°) & SPOT/SUPER-SPOT (30°/15°)



All in one—Electronically Controlled Spot & Flood
 Move over Fresnel. The world's first electronic spot and flood light. So game changing that it's patented, the revolutionary 1x1 Bi-Focus™ features two complete groups of Litepanels' proprietary daylight LEDs—one set of spot and one set of flood—in a single 1'x1' square fixture. With a simple turn of a dial, you crossfade between the two sets to achieve infinitely variable flood or spot output. All in a 3 pound, cool-to-the-touch, super-thin, fit-anywhere fixture.

Flood
Distance
 4 ft. / 1.2M
 8 ft. / 2.4M
 12 ft. / 3.6M

Footcandles
 130 FC
 34 FC
 9.2 FC

LUX
 1400 LUX
 370 LUX
 160 LUX

5600° K Spot
Distance
 4 ft. / 1.2M
 8 ft. / 2.4M
 12 ft. / 3.6M

Footcandles
 140 FC
 53 FC
 13 FC

LUX
 1500 LUX
 560 LUX
 140 LUX

Spot/Super-Spot
Distance
 4 ft. / 1.2M
 8 ft. / 2.4M
 12 ft. / 3.6M

Footcandles
 210 FC
 64 FC
 32 FC

LUX
 2200 LUX
 690 LUX
 340 LUX

LITEPANELS 1X1 SUPER-SPOT: 5600°K WITH 15-DEGREE BEAM ANGLE



Tight, Long Throw—With NO Spill
 While the standard 1x1 Spot focuses the 5600°K beam to 30 degrees, the Super-Spot further focuses the output to a 15-degree beam which concentrates the light in a smaller area and provides a longer throw of the light. Like all Litepanels fixtures, the 1x1 Super-Spot is cool to the touch and uses a small fraction of the power used by traditional lighting fixtures.

Distance
 4 ft. / 1.2M
 8 ft. / 2.4M
 12 ft. / 3.6M

Footcandles
 210 FC
 64 FC
 32 FC

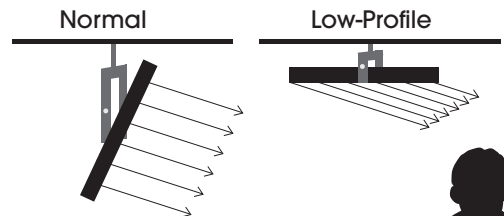
LUX
 2200 LUX
 690 LUX
 340 LUX

LITEPANELS 1X1 LOW-PROFILE: TAKES UP ONLY 3" OF HEADROOM



Ideal for Tight Spaces & Video Conferencing
 Reconfigured versions of the standard Spot, Flood, and Super-Spot designed to mount horizontally against a ceiling or wall. Since the LED bulbs on the Low-Profile are tilted at 40 degrees off axis, the light is uniquely projected forward from the fixture to softly light the subject, and is ideal for low headroom shooting situations. The Low-Profile draws little power and can be operated off 12-volt DC available in a car or bus.

Available in Flood (5600° K & 3200° K), as well as Spot and Super-Spot configurations (5600° K). See data above.



Litepanels Low-Profile features LEDs tilted 40-degrees off axis to save valuable headroom

